

UBP FLEX - BELL GLOBAL EX-ASIA SMID CAP EQUITY

Monthly Institutional Factsheet | 30.10.2020

For Professional Investors in Switzerland or Professional Investors as defined by the relevant laws.

PERFORMANCE & KEY METRICS

ISIN: LU2125595988 (IDq - Share USD)

NAV: 987.49 USD

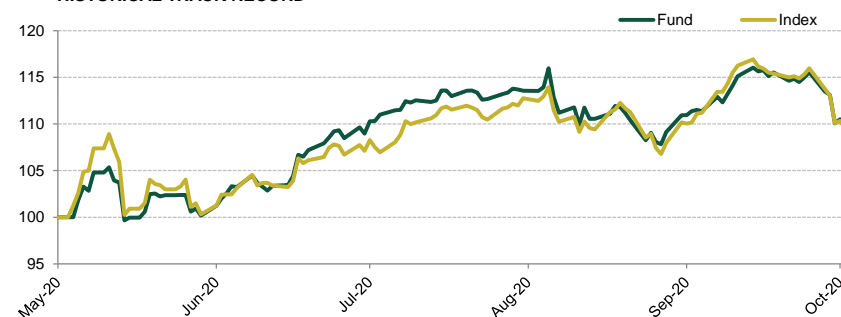
PERFORMANCE

	Fund ¹	Index ²
October 2020	-1.16%	-0.59%
YTD	-	-
1Y	-	-
3Y	-	-
5Y	-	-
Since inception*	10.08%	9.50%
2019	-	-
2018	-	-
2017	-	-

*Inception date : 29.05.2020

Past performance is not a guide to current or future results. See the disclaimer at the end of this document.

HISTORICAL TRACK RECORD*



* rebased at 100

KEY METRICS**

	Fund ¹	Index ²	Fund ¹	Index ²
Annualised Volatility %	17.74	22.62	Sharpe Ratio	1.42 / 1.05
Annualised Tracking Error %	8.82	-	Information Ratio	0.18 / -
Beta	0.73	-	Jensen's Alpha %	7.92 / -
Max Drawdown %	-4.73	-6.58	Active Share	97.47 / -
Drawdown begins at	23.10.2020	05.06.2020	Dividend Yield %	1.16 / -
Period to recover (number of weeks)	≥ 0	6	AUM (USD Mn)	66 / -

**Statistics computed since inception except Active share, Dividend Yield and AUM which are based on the current portfolio holdings

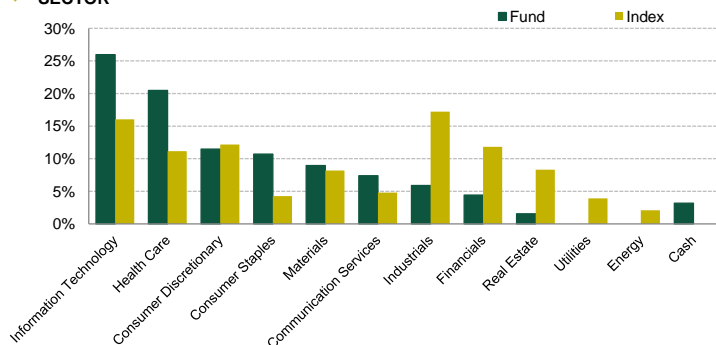
Source: UBP; data as at 30.10.2020

¹ Based on UBP Flex - Bell Global ex-Asia SMID Cap Equity IDq-Share net of fees, USD, ISIN: LU2125595988

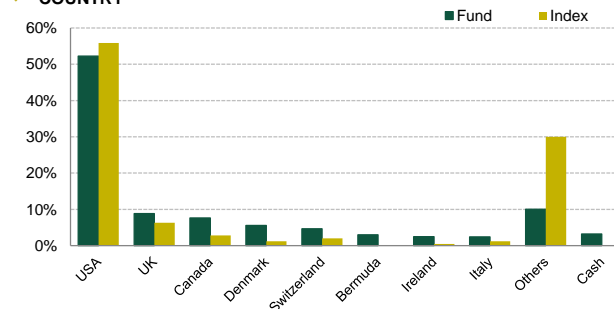
² The index is the MSCI World SMID Cap Net Return, provided for information purposes only. The investment objective does not aim to replicate the index.

PORTFOLIO BREAKDOWNS

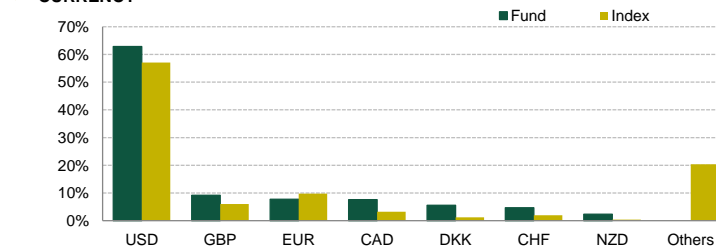
SECTOR



COUNTRY



CURRENCY



Source: UBP; data as at 30.10.2020

The index is the MSCI World SMID Cap Net Return, provided for information purposes only. The investment objective does not aim to replicate the index.

TOP 10 HOLDINGS

Name	Portfolio Weight (end)	Index Weight (end)	Country	Sector
SERVICE CORP INTL	3.89%	0.06%	USA	Consumer Discretionary
ZEBRA TECH -A-	3.57%	0.12%	USA	Information Technology
KROGER CO	3.41%		USA	Consumer Staples
AMERISOURCEBERGEN	3.38%		USA	Health Care
TORO CO	3.07%	0.07%	USA	Industrials
ROGERS COMM -B-	3.03%		Canada	Communication Services
CERNER CORP	3.01%		USA	Health Care
BOOZ ALLEN HAM-A	3.01%	0.08%	USA	Information Technology
GENPACT	2.97%		Bermuda	Information Technology
PARTNERS GRP HLDG N	2.93%		Switzerland	Financials
Total	32.3%	0.3%		

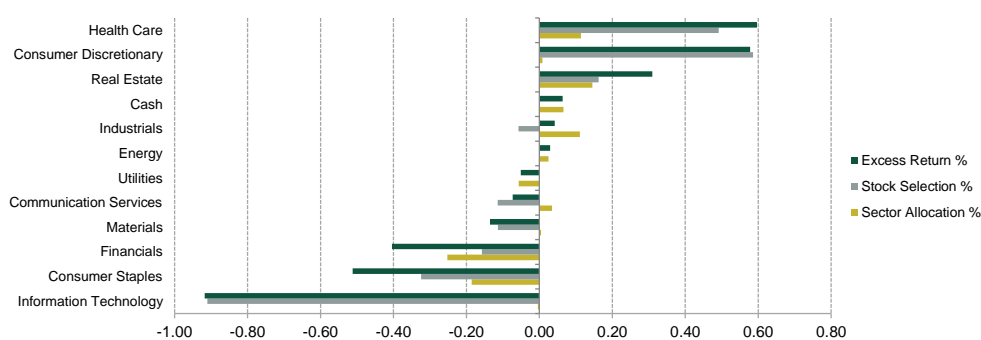
Source: UBP; data as at 30.10.2020

The index is the MSCI World SMID Cap Net Return, provided for information purposes only. The investment objective does not aim to replicate the index.

PERFORMANCE ATTRIBUTION

SECTOR PERFORMANCE ATTRIBUTION

Period	30/09/2020 - 30/10/2020
Net Return %	-1.16
Index Return %	-0.59
Excess Return %	-0.58
Allocation %	0.01
Selection %	-0.44
Currency %	-0.05
Residual %	-0.00
Others %	-0.10



Source: UBP; data as at 30.10.2020

Past performance is not a guide to current or future results. See the disclaimer at the end of this document.

TOP CONTRIBUTORS / DETRACTORS

MAIN RELATIVE CONTRIBUTORS

Name	Portfolio Weight (avg)	Index Weight (avg)	Portfolio Return	Portfolio Contribution	Excess Return Contribution	Country	Sector
ALIGN TECHNOLOGY		0.20%	35.28%		0.44%	USA	Health Care
ZEBRA TECH -A-		0.11%	12.36%		0.39%	USA	Information Technology
SERVICE CORP INTL		0.06%	9.67%		0.33%	USA	Consumer Discretionary
AVERY DENNISON CORP		0.08%	8.16%		0.18%	USA	Materials
AMBU-B BR/RG		0.04%	6.90%		0.17%	Denmark	Health Care

MAIN RELATIVE DETRACTORS

Name	Portfolio Weight (avg)	Index Weight (avg)	Portfolio Return	Portfolio Contribution	Excess Return Contribution	Country	Sector
GENPACT			-11.73%		-0.37%	Bermuda	Information Technology
AMADEUS IT HOLD A			-14.44%		-0.28%	Spain	Information Technology
BRITVIC PLC		0.02%	-10.09%		-0.25%	UK	Consumer Staples
CGI RG SV-A			-8.37%		-0.24%	Canada	Information Technology
KROGER CO			-5.01%		-0.16%	USA	Consumer Staples

Source: UBP; data as at 30.10.2020

The index is the MSCI World SMID Cap Net Return, provided for information purposes only. The investment objective does not aim to replicate the index.

Past performance is not a guide to current or future results. See the disclaimer at the end of this document.

HISTORICAL ANALYSIS

PORTFOLIO DATA

	Oct-20	Sep-20	Aug-20	Jul-20	Jun-20	May-20	Apr-20
Top 10 holdings weight	32.3%	32.3%	33.4%	31.5%	31.1%	-	-
Number of holdings	41	40	40	40	42	-	-
> USD 20 billion	26.0%	27.2%	27.4%	32.2%	27.8%	-	-
USD 10-20 billion	44.4%	42.4%	36.8%	25.7%	35.6%	-	-
USD 5-10 billion	24.6%	25.3%	30.5%	34.3%	27.4%	-	-
< USD 5 billion	5.0%	5.1%	5.3%	7.8%	9.2%	-	-

Source: UBP; data as at 30.10.2020

GENERAL INFORMATION

Name	UBP Flex - Bell Global ex-Asia SMID Cap Equity	Applicable Management fee ¹	AC USD: 1.75% IC USD: 1.00%	IDq USD: 1.00% IHDq USD: 1.00%
Legal form	Luxembourg Domiciled Umbrella SICAV, RAIF (Reserved Alternative Investment Fund)	Performance fee	-	
Base Currency	USD	Registered Countries ²	LU, SG,	
Other Currency Share Classes	-	ISIN	AC USD: LU2125594742 IC USD: LU2125595632	IDq USD: LU2125595988 IHDq USD: LU2125596283
Cut-off time	13:00 (LU time)	Bloomberg Ticker	IDq USD: UFXAIDQ LX IHDq USD: UFGXAIH LX	
Inception date	29/05/2020	Investment Manager	Bell Asset Management Ltd	
Minimum Investment	125'000 EUR or eq	Depository Bank	BNP Paribas Securities Services, Luxembourg Branch	
Liquidity	Daily	Administrator	CACEIS Bank, Luxembourg Branch	

¹ Main share classes mentioned. Other share classes are available. I: Institutional share class. C: Capitalisation share class. D: Distribution Share Class

² We remind you that depending on the country, certain share classes may or may not be registered. Please inform yourself about them before any subscription.

Subscriptions to shares of the Fund can only be made on the basis of the current Key Investor Information Document (KIID), the full prospectus of the Fund, accompanied by the latest available audited annual report and the latest semi-annual report, if published thereafter and available from the fund's headquarters, the general distributor (Union Bancaire Privée, UBP SA, Geneva), or from the local representative for their country.

DISCLAIMER

The fund is registered for distribution to professional investors in Luxembourg, Hong Kong and to accredited investors in Singapore. This fund may only be distributed to duly authorised local entities. Any subscriptions not based on the funds' latest prospectuses, annual or semi-annual reports or other relevant legal documents (the "Funds' Legal Documents") shall not be acceptable.

The funds mentioned in the present document are not registered for public distribution in any jurisdiction and no public marketing may be carried out for them.