

Charges

The charges and commissions are used to cover the Fund's operating costs, including marketing and distribution of shares. These charges reduce the potential growth of your investment.

One-off charges taken before or after you invest

Entry charge	3.00%
Exit charge	None

This is the maximum that might be taken out of your money before it is invested / before the proceeds of your investment are paid out.

Charges taken from the Fund over a year

Ongoing charges	2.59%
-----------------	-------

Charges taken from the Fund under certain specific conditions

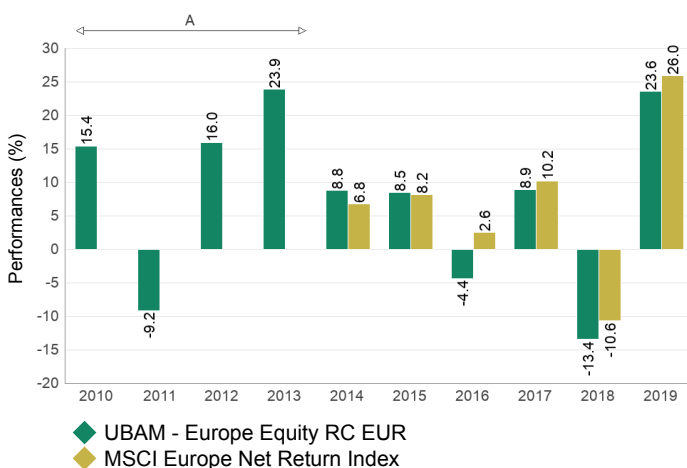
Performance fee	None
-----------------	------

The entry and exit charges shown are maximum rates. In certain cases, the charges paid may be lower. Your financial advisor or distributor can inform you of the associated entry and exit charges.

Ongoing charges are based on the charges for the previous year, ending on 31 December 2019. This percentage may vary from year to year. It excludes outperformance charges and intermediation charges, with the exception of entry and exit charges paid by the Fund when it buys or sells shares of another fund.

For more information about Fund charges, please refer to the relevant sections of the prospectus, which is available at www.ubp.com.

Past performance



A: Investment policy changed on 17/01/2013

The performance figures shown in the bar chart are not a reliable indication of future performance.

Annualised performance is calculated after deducting all charges taken from the Fund.

Fund creation date: 13/11/1992

Share class launch date: 03/06/2003

Share class currency: EUR

Please note that the Benchmark currency may differ from the share class currency.

Practical information

Depository: BNP Paribas Securities Services Luxembourg, Luxembourg Branch, 60, avenue J.F. Kennedy, L-1855 Luxembourg, Grand-Duchy of Luxembourg.

UBAM is an umbrella SICAV offering multiple sub-funds whose assets and liabilities are legally segregated from each other.

Copies of the prospectus and the latest periodical regulatory information, as well as other practical information may be obtained free of charge in English from UBP Asset Management (Europe) S.A., 287, 289 route d'Arlon, L-1150 Luxembourg, Grand Duchy of Luxembourg.

The Swiss representative and paying agent is Union Bancaire Privée, UBP SA, 96-98, rue du Rhône, 1211 Geneva 1, Switzerland (UBP). The prospectus, articles of association, documents KIID and annual and semi-annual reports may be obtained free of charge from the Swiss representative.

The Fund offers other share classes as further defined in its prospectus. Conversion into shares of another share class within this Fund or into shares of another Fund may be made as set out in the "Conversion of Shares" chapter of the prospectus.

The net asset value is available on request at the Fund's registered office and on the website www.ubp.com.

PEA eligible in France.

Depending on your tax regime, any capital gains and income arising from the ownership of shares in the Fund may be subject to taxation. We advise you to consult your financial advisor for more information on taxation.

The Fund may only be held liable on the basis of statements contained in this document that are misleading, inaccurate or inconsistent with the relevant sections of the Fund's prospectus.

Information related to the remuneration policy of UBP Asset Management (Europe) S.A., including but not limited to a description of how remuneration and benefits are calculated, individuals responsible for awarding the remuneration and benefits including, as the case may be, the composition of the remuneration committee are available at <https://www.ubp.com/fr/nos-bureaux/ubp-asset-management-europe-sa>. A paper copy may be obtained free of charge upon request at the Fund's registered office.

UBP Asset Management (Europe) S.A. and UBAM are domiciled in Luxembourg and are supervised by the Commission de Surveillance du Secteur Financier (CSSF).

This key investor information is accurate as at 26/06/2020.